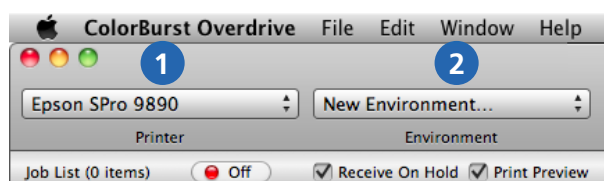


Quick Start Guide

Welcome to ColorBurst Overdrive. Before printing, you'll need to create a new Environment. An Environment saves all of Overdrive's settings for a printer and paper combination so you'll only have to set them once. The best way to use Overdrive is to make a new Environment for each type/size of paper you use. After your Environments are saved, you can easily switch between Environments whenever you change paper to recall all of your settings. This guide walks through creating an Environment and printing.

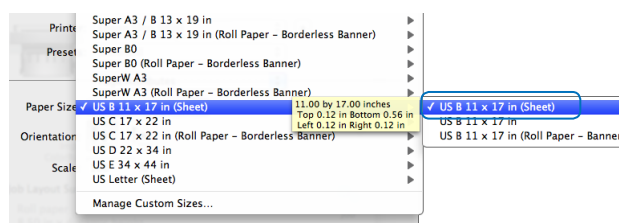
BUILD AN ENVIRONMENT (ONE-TIME SETUP)

CREATE A NEW ENVIRONMENT



1. Select your printer in the Printer list. *If your printer is not shown in the list, please install the latest driver for your printer.*
2. Select New Environment.

PRINTER: PAPER SIZE (SHEET/ROLL, BORDERLESS)



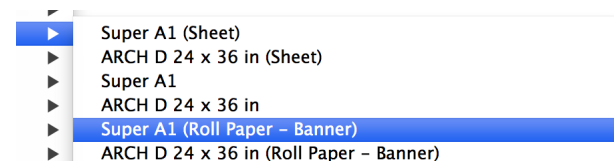
The Environment window opens in the Page Attributes settings. Select a Paper Size to match the paper loaded in your printer. This selection ensures the driver will not clip your print.

Some printers have paper sizes indicating sheet, roll, and borderless options—be sure to select the correct paper size for how you intend to print. If you hover over the paper size, a yellow box with the exact dimensions and printer margins will appear.

Sheet: Select a paper size that matches the width and height of the paper you are using. If you do not see your paper dimensions listed, look under named paper sizes such as Super A1 (24" wide) or Super B0 (44" wide) to locate a match.

Roll (not borderless): If you want to print on roll paper but do not have a specific need to print borderless, *do not select a Borderless paper size.* Select the **Roll Paper - Banner** size that matches the width of your media. (Ignore the length here—Overdrive's Page settings will override the paper length in this case.)

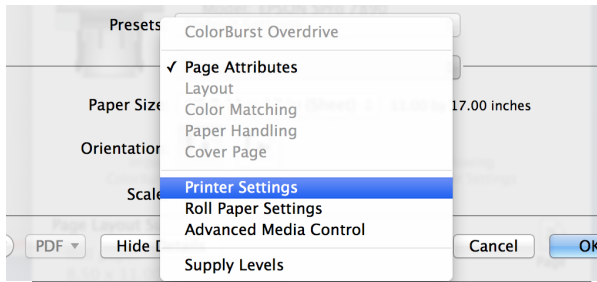
For some printers, Roll Paper - Banner is listed with the sheet sizes, not with the roll sizes. If you do not see Roll Paper - Banner with the roll sizes, please look under the sheet size listings.



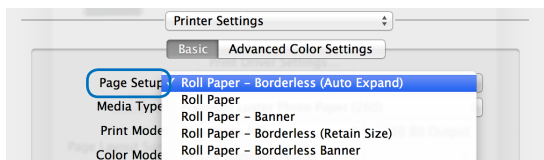
Roll borderless: To print borderless, you must select a custom paper size that matches the dimensions of your image exactly. If one does not exist, select Manage Custom Sizes (at the bottom of the Paper Size menu) to add a custom paper size that matches your image exactly. All four margins must be set to zero.

PRINTER: LOCATE YOUR PRINTER SETTINGS

Click Page Attributes to locate the main printer settings in the menu. Each printer driver is different. Your settings may be named “Printer Settings” or “Main” depending on the driver you are using.

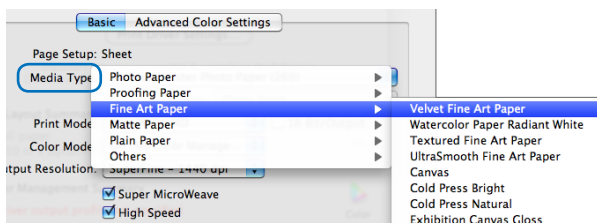


PRINTER: PAGE SETUP (CUSTOM PAPER SIZE ONLY)



If you are using a custom paper size for borderless printing, select Roll Paper - Borderless (Auto Expand). (If you are not using a custom paper size, this setting will be dimmed.)

PRINTER: SELECT A MEDIA TYPE

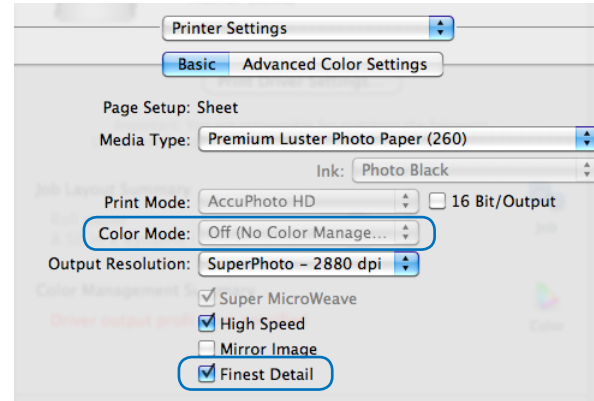


Locate the Media Type menu and select the paper you are using, or select a media type similar to your paper thickness. If you plan to use an ICC profile

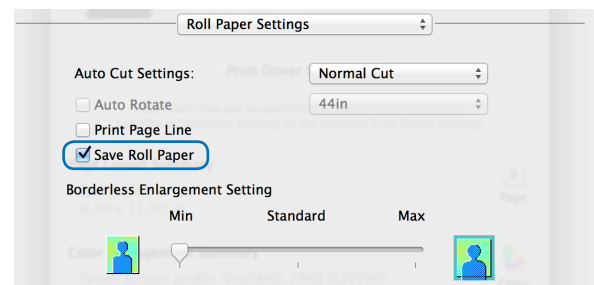
from your paper manufacturer, select the media type specified by your paper manufacturer.

PRINTER: COLOR MODE AND FINEST DETAIL

- As of Overdrive version 2.2.2, color management is automatically disabled. Any color mode settings are turned off and dimmed. (Older versions require turning it off manually.)
- Be sure to select the Finest Detail setting after all changes are made—some changes may set Finest Detail off by default.



PRINTER: ROLL PAPER SETTINGS



If you are using roll media, set your driver's settings for roll and/or borderless printing. Different settings are available for Banner or Borderless roll paper.

If you selected Roll Paper - Banner, select the Save Roll Paper checkbox.

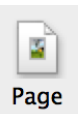
If you selected Borderless (Auto Expand), set the enlargement setting to “Min” for minimal image enlargement when printing borderless.

PRINTER: CLICK OK TO CONTINUE

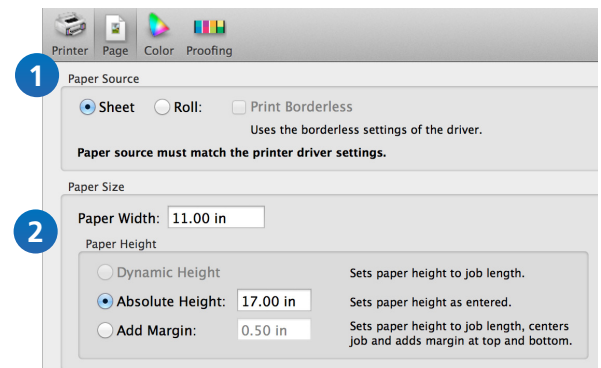
When you are finished setting your printer settings, click the OK button to close the Printer settings portion of the New Environment dialog.

CLICK PAGE BUTTON TO CONTINUE

Click the Page button to set the Overdrive Page settings. These settings are saved as part of the environment.

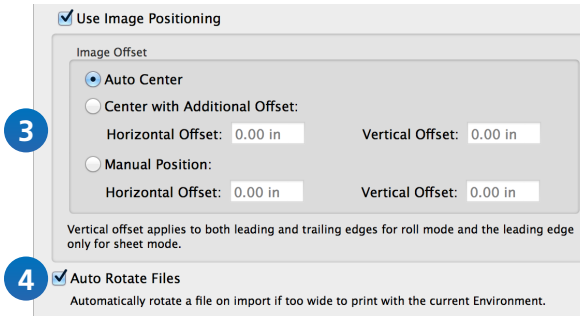


JOB: OVERDRIVE PAGE SETTINGS



1. Select Sheet or Roll to match the Printer settings. If you selected a Borderless roll paper, select the Print Borderless checkbox.

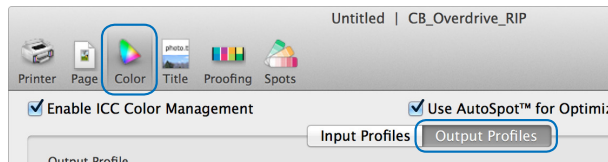
2. Type in the width of your paper. For sheet, type in the Absolute Height of your paper. For roll, select Dynamic Height to print to the length of an image, or type in an Absolute Height to tell a roll to feed/cut to a certain length.



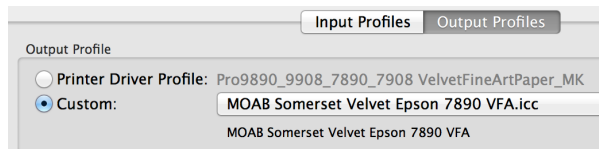
3. If you want to center your images, click the Use Image Positioning checkbox to select Auto Center. You may also use positioning to add margins or manually position images.
4. Select Auto Rotate Files to rotate images that need to be rotated to fit the paper dimensions.

CLICK COLOR BUTTON TO CONTINUE

Click the Color button at the top of the dialog and select the Output Profiles tab.



COLOR: OUTPUT ICC PROFILE



- In many cases, the Printer Driver Profile will be selected for you by the Media Type you selected in the Printer Settings. If the Printer Driver Profile name matches your paper, you do not need to change anything.

- If the name is shown in red as missing or a mismatch, or you want to use a custom RGB paper profile, select Custom to select a profile.

TITLE, PROOFING, SPOTS (OPTIONAL)

Click the Title button if you would like to add a job title to the top or bottom of each image printed from the Overdrive Job List. Titles may include the date and time printed, the environment name, and a comment in addition to the file name.

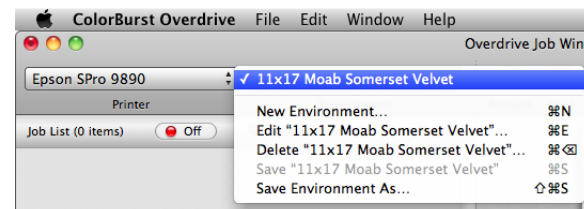
Click the Proofing button if you would like to add an IDEAlliance color control wedge or custom color bar/footer file to the bottom of each image.

Click the Spots button if you would like to define RGB, CMYK, or Lab values for custom spot colors or spot color tints. The spot color name must be an exact match to the spot color in the job.

CLICK SAVE AS

Click the Save As button to save your new Overdrive environment. It is helpful to include specific settings in the Environment name, such as paper size, paper type, roll, borderless, etc.

Once your environment is saved it will appear in the Environments pulldown menu in the Overdrive Job Manager.



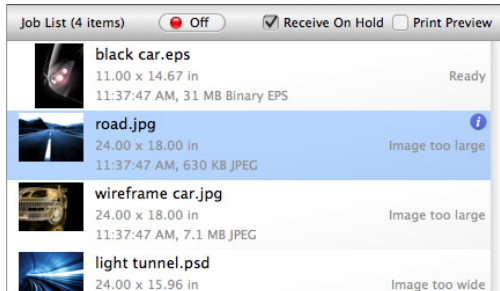
Now that you have built an Overdrive environment, you are ready to print. Create additional environments for each printer and paper that you plan to use. Once you have built the environments you will need, you can refer to the next page for regular print operation:

1. Select an environment
2. Add files to the job list
3. Scale, rotate, or change number of copies (optional)
4. Change file status to "Ready"
5. RIP on

JOB LIST

ADD FILES TO THE JOB LIST

There are several ways to add files to the Job List.



Open

Select File > Open to add files to the Job List.

Drag and drop

You may drag files from the desktop, any local folder, or any networked folder to the Job List.

Copy files to the Overdrive Hot Folder

Overdrive scans the Hot Folder for files and moves them immediately into the Job List for printing. *Any file placed in Hot Folder will be deleted from the folder after it is placed in the Job List.*

SELECT AND MOVE FILES

Click a file to select it in the Job List. Click and drag to select multiple files, or hold the shift key or command key. To move a file or files in the list, click and hold the file until it becomes movable.

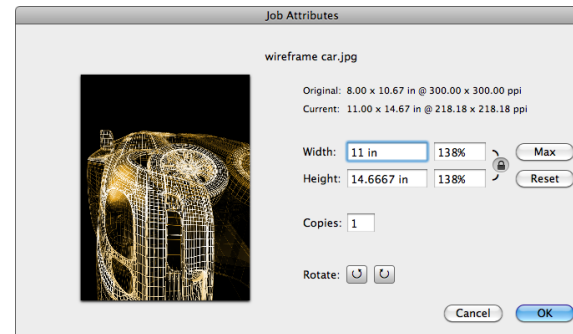
IMAGE TOO WIDE, TOO LONG, OR TOO LARGE

These images will need to be scaled before printing. Click the **i** button or double-click a file to scale in the Job Attributes dialog.

SCALE AND ROTATE

JOB ATTRIBUTES

Click the **i** button or double-click a file in the Job List to open the Job Attributes for that file.



SCALE

Original: 8.00 x 10.67 in @ 300.00 x 300.00 ppi
Current: 11.00 x 14.67 in @ 218.18 x 218.18 ppi

Width: 11 in 138% Max
Height: 14.6667 in 138% Reset

Type in a width, height, or percentage to scale the file. The Max button scales the file to the largest print size based on a minimum print resolution of 100 ppi. Click Reset to set the file to 100% (original size). To scale width and height independently, deselect the lock button.

NUMBER OF COPIES

Type in the number of copies to print. You will see the number of copies displayed in the Job List.

ROTATE

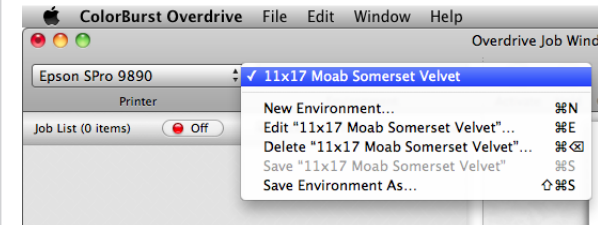
The rotate buttons turn the file counterclockwise or clockwise by 90°, as shown in the preview.

Rotate: [Counterclockwise] [Clockwise]

PRINT

SELECT YOUR PRINTER AND ENVIRONMENT

Begin by selecting your printer and Environment in Overdrive.

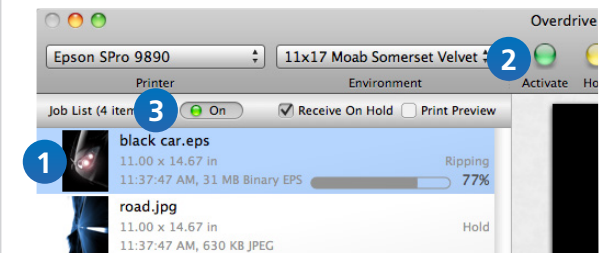


PRINTER "READY" AND PAPER LOADED

Before printing, go to your printer and make sure:

- the printer is plugged in and powered on;
- the printer has a "Ready" status at the printer's front control panel;
- paper that matches your Overdrive environment is properly loaded in the printer.

FILE "READY" AND RIP ON



1. Select the job(s) you want to print in the Job List.
2. Click the green Activate button in the toolbar to change the status from Hold to Ready.
3. Turn the RIP button On to start printing.

Files move to the Done list after printing. To reprint a file, click and hold to move the file to the Job List.